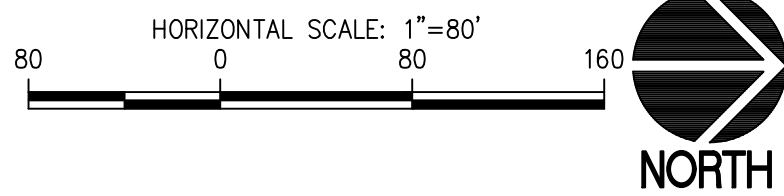


GENERAL NOTES

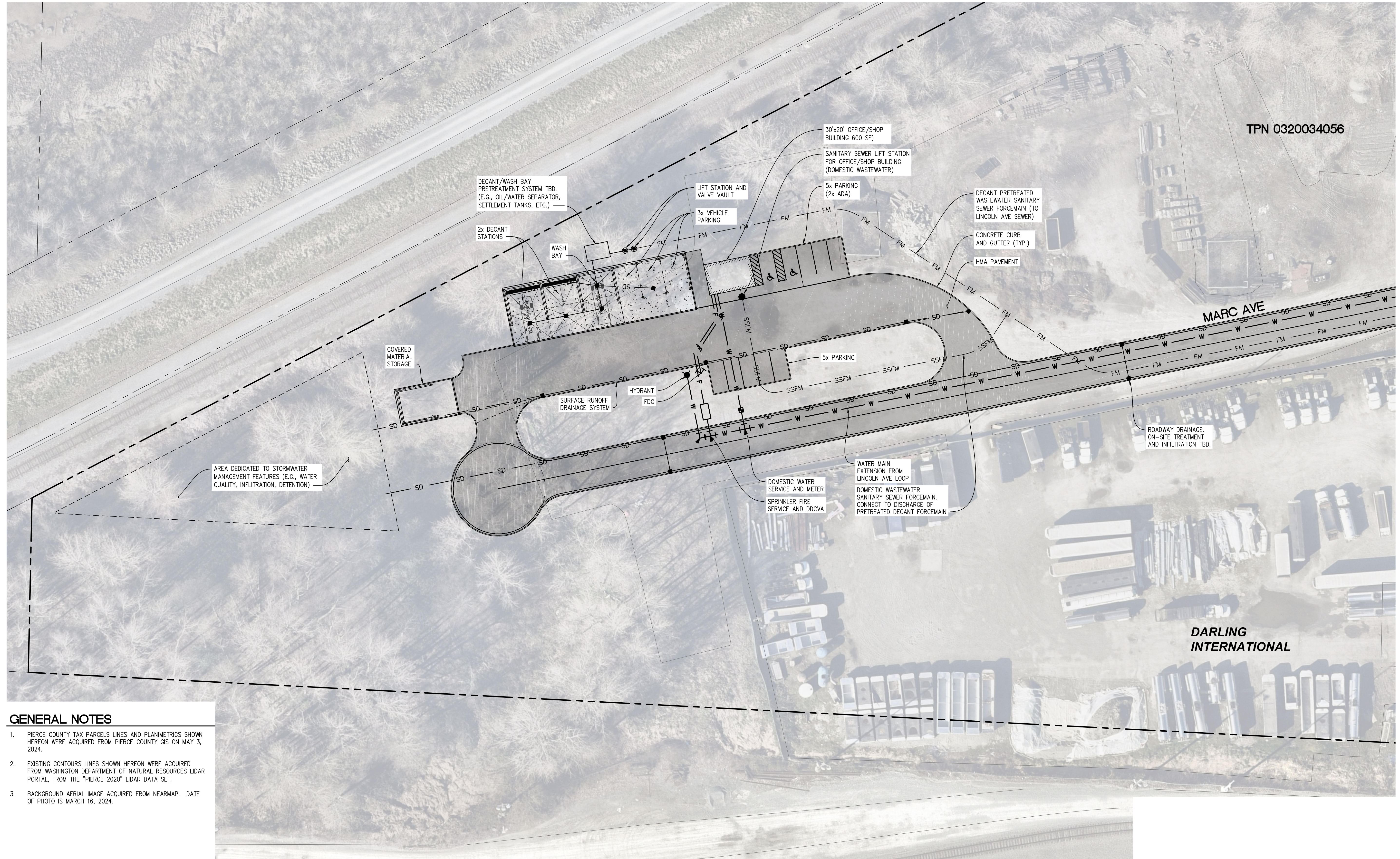
- PIERCE COUNTY TAX PARCELS LINES AND PLANIMETRICS SHOWN HEREON WERE ACQUIRED FROM PIERCE COUNTY GIS ON MAY 3, 2024.
- EXISTING CONTOURS LINES SHOWN HEREON WERE ACQUIRED FROM WASHINGTON DEPARTMENT OF NATURAL RESOURCES LIDAR PORTAL, FROM THE "PIERCE 2020" LIDAR DATA SET.
- BACKGROUND AERIAL IMAGE ACQUIRED FROM NEARMAP. DATE OF PHOTO IS MARCH 16, 2024.

1 OVERALL CONCEPTUAL PLAN  
SCALE: 1"=80'



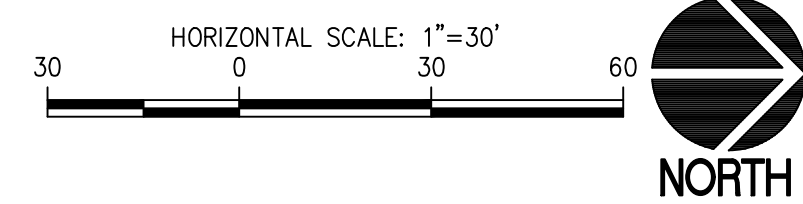
6707 <b>EXH 1.0</b> SH # XX OF XX	DECANT FACILITY AND STORMWATER CENTER OVERALL CONCEPTUAL PLAN		APPROVED:	CHECKED BY: 11.26.24	DATE: 11.26.24
	CONT/CONS: 072155	TOWNSHIP: 20 NORTH	RANGE: 3 EAST	SECTION: 03	DIRECTOR ENG. DATE: donadis Nov 27, 2024
M. ID: 101640.01	DAT-HRZ: WA83/2011		VERT: MLLW 17.66' @ POT MON #N	PRINTED BY: donadis	
PHASE: 30% DESIGN	PARCEL: 0320031063, -4056		DRAWING SCALE: AS NOTED		PORT ADDRESS: ONE SITCUM PLAZA TACOMA, WA 98401-1837
THIS DRAWING IS THE PROPERTY OF THE PORT OF TACOMA AND SHALL NOT BE USED ON OTHER WORK, DISCLOSED, COPIED, IN WHOLE OR IN PART. WITHOUT WRITTEN PERMISSION			MARK: REVISION: BY: DATE: APPR: DATE:		
shitts & hill CIVIL & STRUCTURAL ARCHITECTURAL & SURVEY P.O. BOX 1837 TACOMA, WA 98401 (203)883-5441 PHONE (253) 242-4449 FAX (253) 242-4450 http://www.shitts-hill.com			Port of Tacoma P.O. BOX 1837 TACOMA, WA 98401 (203)883-5441		








1. PIERCE COUNTY TAX PARCELS LINES AND PLANIMETRICS SHOWN HEREON WERE ACQUIRED FROM PIERCE COUNTY GIS ON MAY 3, 2024.
2. EXISTING CONTOURS LINES SHOWN HEREON WERE ACQUIRED FROM WASHINGTON DEPARTMENT OF NATURAL RESOURCES LIDAR PORTAL, FROM THE "PIERCE 2020" LIDAR DATA SET.
3. BACKGROUND AERIAL IMAGE ACQUIRED FROM NEARMAP. DATE OF PHOTO IS MARCH 16, 2024.

**1 ENLARGED CONCEPTUAL PLAN**  
SCALE: 1"=30'



<div> <div>6707</div> <div>EXH 1.1</div> <div>SH # XX OF XX</div> </div>		<div> <div>DECANT FACILITY AND STORMWATER CENTER</div> <div>ENLARGED CONCEPTUAL PLAN</div> </div>		<div> <div>APPROVED:</div> <div>11.26.24</div> </div>		<div> <div>  </div> </div>		<div> <div>  </div> </div>		<div> <div>  </div> </div>	
<div>CONTRACT/CONS: 0721155</div>	<div>TOWNSHIP: 20 NORTH</div>	<div>RANGE: 3 EAST</div>	<div>SECTION: 03</div>	<div> <div> <div>CHECKED BY</div> <div>DATE</div> </div> </div>		<div> <div> <div>REVISION:</div> <div>BY:</div> </div> </div>		<div> <div> <div>MARK:</div> <div>APPR:</div> <div>DATE:</div> </div> </div>			
<div>M. ID: 101640.01</div>	<div>DAT-HRZ: WA83/2011</div>	<div>VERT: MLLW 17.66'</div>	<div>@ POT MON #N</div>	<div> <div> <div>PROJ. ENGR</div> <div>DATE</div> </div> </div>		<div> <div> <div>REVISION:</div> <div>BY:</div> </div> </div>		<div> <div> <div>MARK:</div> <div>APPR:</div> <div>DATE:</div> </div> </div>			
<div>PHASE: 30% DESIGN</div>	<div>PARCEL: 0320031063,-4056</div>	<div>DRAWING SCALE: AS NOTED</div>	<div>TACOMA, WA 98401-1837</div>	<div> <div> <div>PRINTED BY:</div> <div>donovans Nov 27, 2024</div> </div> </div>		<div> <div> <div>REVISION:</div> <div>BY:</div> </div> </div>		<div> <div> <div>MARK:</div> <div>APPR:</div> <div>DATE:</div> </div> </div>			

THIS DRAWING IS THE PROPERTY OF THE PORT OF TACOMA AND SHALL NOT BE USED ON OTHER WORK, DISCLOSED, COPIED, IN WHOLE OR IN PART, WITHOUT WRITTEN PERMISSION